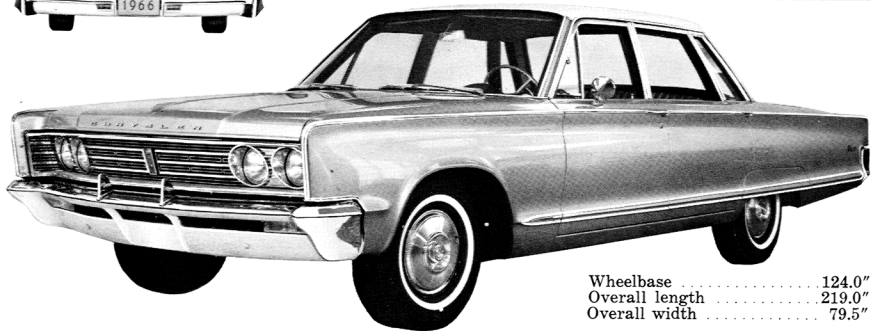




NEWPORT

*2-DOOR HARDTOP • 4-DOOR HARDTOP
CONVERTIBLE • 4-DOOR SEDAN
4-DOOR TOWN SEDAN (6-window)*



Wheelbase	124.0"
Overall length	219.0"
Overall width	79.5"

NEWPORT FEATURES

Newport offers six different interior trim designs for 1966. Three are standard cloth-and-vinyl trims . . . two are all-vinyl bench trims optional on certain models . . . one is a vinyl bucket-seat option.

The standard Town Sedan trim features a fine jacquard fabric for the seat and seat-back insert that is pleated in the seat area and near the top of the seat-back. Seat bolsters are trimmed in rich, leather-grained vinyl.

The standard hardtop trim features body cloth woven into a three-dimensional ribbed pattern. Puffed, vinyl-covered bolsters surround the cloth inserts to form a bucket-seat motif.

The standard four-door sedan trim features jacquard-weave body cloth for seat cushion and seat-back with grained-vinyl seat bolsters.

All-vinyl trim, with front-seat folding center armrest, is standard on the Newport convertible.

Newport all-vinyl Bucket Seats
(optional on 2-dr. H.T. only)



All-vinyl trim, optional on the 4-door Sedan at extra cost and Town Sedan at no extra cost, has the same basic pattern as the Town Sedan cloth-and-vinyl trim. Both front and rear seats are foam-padded.

All-vinyl trim, optional on 2- and 4-door hardtops with bench seats, has the same pattern as the standard cloth-and-vinyl trim except for full pleating in seat and back inserts. This option also includes folding center armrest for front seat and foam padding for both seats.

All-vinyl trim, with shell-contoured front bucket seats and front-seat folding center armrest, is optional on the 2-door hardtop model only.

ENGINES AND TRANSMISSIONS

Standard engine:

Firepower 383-cu.-in. V-8 with 2-barrel carburetor. Horsepower, 270.

Optional engines:

Firepower 383-cu.-in. V-8 with 4-barrel carburetor. Horsepower, 325.

Firepower 440-cu.-in. TNT V-8 with 4-barrel carburetor. Twin snorkel air cleaner and twin exhausts. Horsepower, 365 w/TorqueFlite only.

Standard transmission: 3-speed Manual.

Optional transmission: 3-speed TorqueFlite automatic.

EXTERIOR FEATURES

- Full-length, stainless-steel upper body side molding.
- $\frac{3}{4}$ -length, double-track, aluminum lower body side molding with optional, contrasting paint sweep insert.
- Newport script on rear fenders.
- Forged-aluminum letters CHRYSLER on trunk lid and hood.
- Rear roof pillar belt molding.
- Hubcaps; stainless-steel wheel covers, optional.
- Long, rectangular taillight lenses without division bars.
- Horizontal grille pattern features chrome-plated, die-cast bars on either side of the centrally mounted Chrysler medallion.
- Vinyl roof covering optional on Town Sedan and hardtops.

INTERIOR FEATURES

- Cloth-and-vinyl seat trim standard on all models except convertible, which features all-vinyl trim standard. All-vinyl trim is optional on all models except convertible. Front bucket seats are optional on 2-door hardtop only.

Continued next page

NEWPORT FEATURES (Continued)

- Front compartment console is optional on bucket-seat model with TorqueFlite automatic transmission only.
- Separate front-seat headrests are available with bucket seats.
- Nylon-blend carpeting on floor of passenger compartment.
- Three-spoke steering wheel with partial horn ring.
- Suede-like-finish black insert across mid-section of instrument panel.
- Tilt-A-Scope adjustable steering wheel optional.
- 6-way custom-positioned front seat, manual.
- 6-way power seats optional.
- Crank-operated, draft-free front vent windows.
- Curved-glass side windows.
- Built-in side cowl fresh-air inlets.
- Fresh-air heater and defroster with quick, air-mix temperature control.
- Rear air and heat system optional.
- Glove box with tissue dispenser, sliding map tray and cup recesses on the door.
- Instrument panel convenience drawer with dual ashtrays, cigar lighter, coin holder and light.
- Trip odometer. • Ignition switch light.
- Rear roof pillar courtesy lights on hardtops.
- Rear compartment pocket panel courtesy lights on

convertible.

- Map and courtesy light standard on convertible, optional on other models.

SAFETY FEATURES

- Safety-padded instrument panel.
- Safety seat belts, 2—front and 2—rear.
- Variable-speed, anti-windlift electric windshield wipers, parallel-operating, 18" long.
- Electric windshield washer.
- Outside rearview mirror, left.
- Backup lights. • Safety door latches.
- Safety inside door release handles.
- Safety-Rim wheels.
- Low-profile tires: 8.25 x 14"

NEWPORT PERFORMANCE PACKAGE

- Firepower 440-cu.-in. TNT V-8 with 4-barrel carburetor, twin snorkel carburetor air cleaner and twin exhaust. Horsepower, 365.
- Heavy-duty front torsion-bar springs.
- Heavy-duty rear leaf springs.
- Heavy-duty shock absorbers, front and rear.
- Front wheel disc brakes with power assist.
- Special "Disc" wheel covers.
- 15" wheels with 8.45 x 15" low-profile tires.