

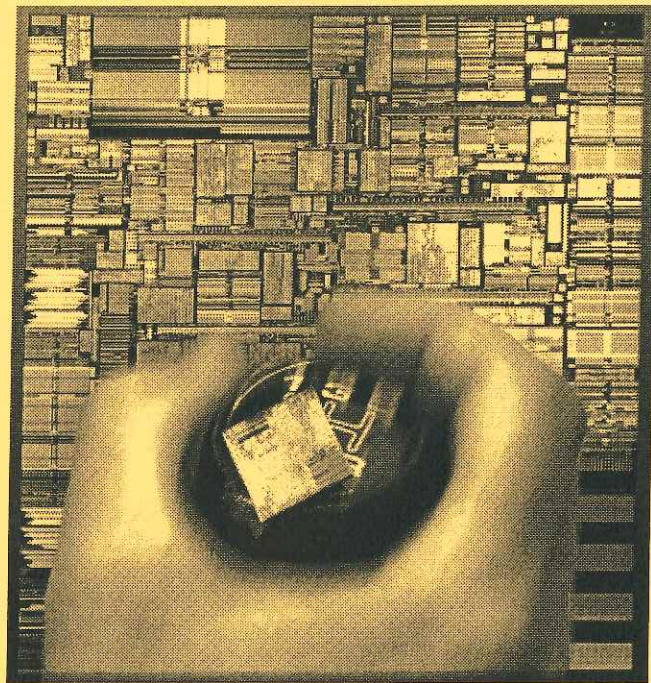
University of Wisconsin–Madison, Physics Department

2000 JULIAN E. MACK LECTURE

Design of the IBM Power4 Processor

Carl Anderson

IBM



The POWER4 processor chip is one of the most complex processor chip to date with 2 microprocessor cores, a shared L2, an L3 directory and a switch fabric for large SMPs. The system and physical design will be described.

Friday, November 10, 2000 • 4:00 P.M. • 1300 Sterling Hall